

# Patient Transfer Scale

Marsden M-999 Transfer Board with Built-In Weighing Scale



- Weigh immobile patients instantly and accurately
- Quick and easy - no more guessing weight
- Use during patient transfer from trolley to bed
- A more dignified, less stressful way to weigh patients

## Weigh immobile patients in seconds!

A revolutionary idea - invented by an ED nurse, and now used worldwide. The Patient Transfer Scale is a transfer board with built-in weighing scale: Use it to weigh an immobile patient instantly during transfer from trolley to bed.

That means you no longer need to estimate the weight of a patient in order to administer drugs or treatment quickly. And because the PTS weighs patients during lateral transfer - an existing process - you don't need to account for the time it takes to weigh them using bed scales or hoist scales.

Easier for staff, instant, accurate results - and better outcomes for patients.

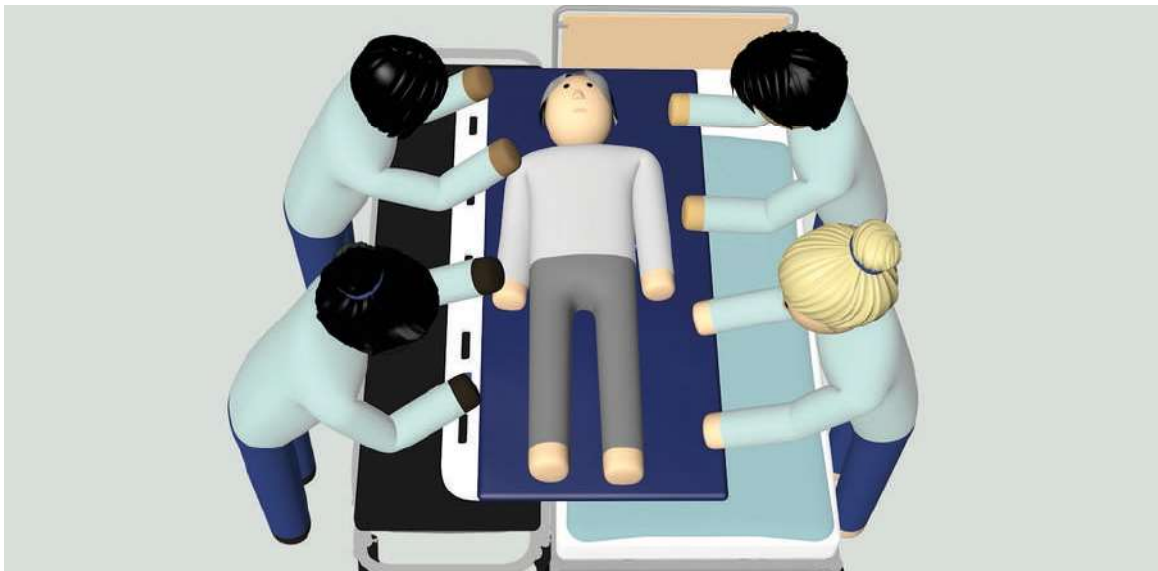
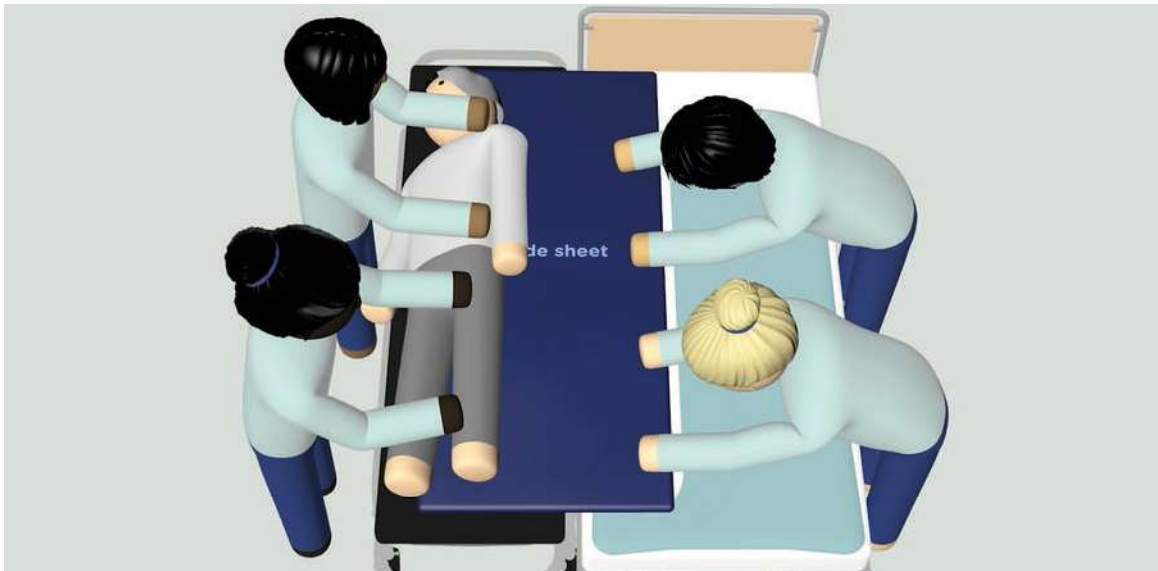


### Accessories:



CC-999

Capacity:	250kg	Adaptor Specification:	5V 1.2A
Graduations:	500g	Battery Life:	50 hours of continuous use
Dimensions:	1800mm x 700mm x 30mm	Weight of Scale:	11kg
Power Supply:	Internal Rechargeable Battery		



Watch the full animated video here:

